



## VIAjet V-Series Specs

### Print Capabilities

- + Static, dynamic, user-editable variable fields, and logos
- + Customizable date and time codes, sequential and batch counters
- + TrueType fonts with unique ink-saving print density and object color settings
- + 1D barcodes (GS1-128, GS1 DataBar, EAN-8/13, UPC-A, ITF/ITF-14, Code 39/128)
- + 2D codes (GS1-Data matrix, Data matrix, QR code)

### Inks

- + Porous and non-porous substrates as well as opaque and pigmented applications
- + Engineered for building products, sheet metal, paper, pulp, wood, concrete, plastics, packaging, and other challenging substrates

### Ink Delivery System

- + Multiple options: 2x1 liter, 19 liter/5 gallon, 208 liter/55 gallon, 275 gallon totes
- + Dye-based or circulatory for pigmented inks
- + Integrated low ink warning and warning output signals

### V-Series V-Link

- + Connect 1–4 printheads (maximum of 32 valves)
- + Connect up to 2 triggers and 2 encoders per V-Link
- + Electrical Operating Conditions: 90–264 V AC 50–60 Hz 2.5 A Temp: 32–113° F (0 - 45° C) Humidity: 0–90 % non-condensing IP53

	Minimum character size	Maximum character size	Maximum speed	Maximum print distance <sup>3</sup>	3-way valve <sup>5</sup>	Dimensions
8000+ Maxi	1/4" (6.35 mm)	7-VALVE: 1 1/4" (31.75 mm)	780 fpm <sup>1</sup> / 3.96 mps	1/2" (12.7 mm)	16-Valve	7-VALVE: 7.52" L x 1.68" W x 4.83" H (191 x 42.7 x 123 mm)
8000+ Midi	3/16" (4.76 mm)	16-VALVE: 2 1/2" (63.5 mm)	400 fpm <sup>2</sup> / 2.03 mps			32-Valve
8000+ Mini IP65-7-VALVE PRINthead* AVAILABLE FOR WASHDOWN APPLICATIONS	3/32" (2.38 mm)	32-VALVE: 5" (127 mm)		1/4" (6.357 mm)		
Inks	Water Based, Water Fast, Alcohol (n-propylene, isopropylene, ethenol). Ethyl Acetate, MEK, Acetone, Pigmented					

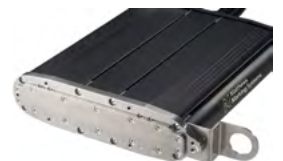
(1) At 1.8 mm spacing (2) At 1.0 mm spacing (3) At <200 fpm (4) IP65 3.4" Dia. x 5.2" L (87.5x132.0 mm) (5) Unique 3-way valve enables you to quickly purge solvent, minimizing maintenance and downtime



7-Valve



16-Valve



32-Valve

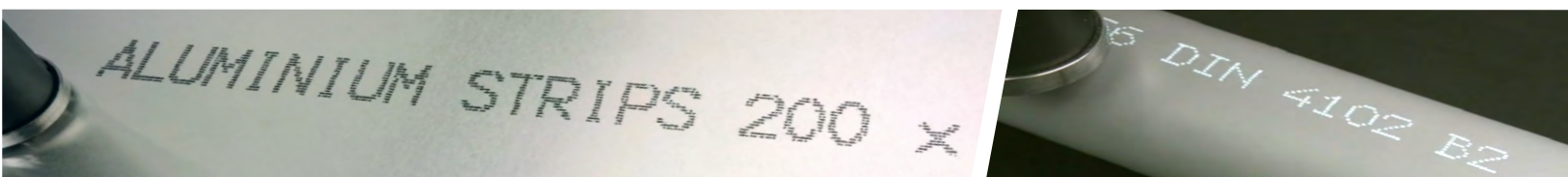
## MPERIA Platform

### MPERIA® Controller

- + Control multiple marking technologies and production lines
- + Ethernet-based with advanced connectivity possibilities for ERP systems, computers, PLCs
- + Password-protected user levels
- + Remote user interface control via VNC
- + Multilingual with full BIDI support
- + Intuitive touchscreen user interface
- + Built-in database and on-board image editor
- + Simple message creation and editing
- + Installation, configuration, troubleshooting, and maintenance guidance
- + Windows/Codesoft driver
- + Ample storage for messages, logos, barcodes, time codes, etc.



V-Link



372  
333720  
372123720  
7